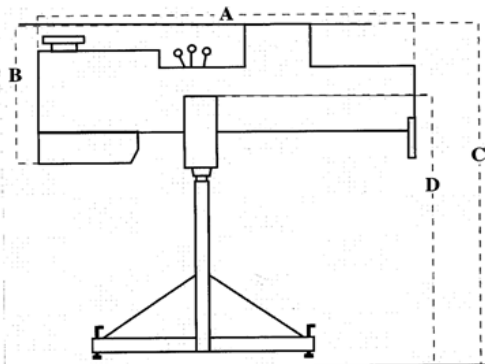


1295 ELT

MODEL 1295

ARCHITECT & ENGINEERS' SPECIFICATIONS

The luminaire shall be a 3000-4000 watt follow spotlight designed to be used with various manufacturers 3000w or 4000w xenon lamps. The optical train shall consist of a high-precision, electro-formed, coated reflector, heavy duty nichrome iris, chopping shutter, gobo holder, fader, effect slot and a single lever variable focal length zoom objective lens system. A rapid focus knob located on both sides of the spotlight shall focus within 4 revolutions. All lenses shall be clear optical grade lenses. The color boomerang shall be mid-mounted and reversible and use industry standard 9" frames. Top mounted controls for the iris, fader and shutter along with dual control for zoom and a reversible color boom shall make the spotlight readily convertible from right to left operation. The power supply shall be of the electronic type mounted with a separate enclosure and be connected to the spotlight head via a multi-pin connector for the control circuits and camloc type connectors for the DC lamp current. Cooling shall be provided by three quiet blowers. A slide control shall be provided to adjust the tilt balance to suit individual operators. The spotlight body shall be constructed of cold rolled sheet steel and aluminum extrusions and shall be finished in black wrinkle powder coated baked finish. A choice of either a four legged rigid base or a three legged folding base shall be provided. Head dimensions (not mounted on a base) shall not exceed 76" L x 29" H x 20-1/2" W (including controls) with a head weight of 183 lbs. The remote power supply shall be of the electronic switching type and shall operate on 205 to 240 VAC, 50 or 60 Hz. The spotlight is of the xenon type which must be operated and maintained by individuals trained in the operation, maintenance, and hazards of xenon lamps. The spotlight shall be the Lycian Stage Lighting Model 1295 ELT.



- A. Head Length 74.75" (1.9m)
- B. Head Height 29" (73.6 cm)
- C. Overall Height with Base 67" (1.7m)
- D. Height of Pivot 51" (1.3m)

- Width of Base 34" (86 cm.)
- Max Width of Head, inc. controls 20-1/2" (52 cm.)
- Head Weight 183 lbs. (83 Kg)
- Base Weight 74 lbs (33.5Kg)
- Ballast Weight 75 lbs. (34Kg)

BEAM ANGLE 3° - 8.5°

ORDER CODES

1295	ELT w/ 4 Leg Base
1295/3	ELT w/ 3 Leg Base

**30 Amp Service Required for
3000 Watt Lamp Use**

**50 Amp Service Required for
4000 Watt Lamp Use**



PHOTOMETRICS with 3000w LAMP

THROW	100'/30M	150'/46M	200'/61M	300'/92M	400'/22M
SPOT					
FOOTCANDLES/ LUX	2339/25,177	1040/11,194	585/6297	260/2799	146/1572
MIN. DIA. IRIS CLOSED	1'/ 30cm	1.5'/ 46cm	2'/ 61cm	3'/ 92cm	4'/ 102cm
MIN. DIA.	6'/ 1.8m	9'/ 2.7m	12'/ 3.6m	18'/ 5.4m	27'/ 8.1m
FLOOD					
FOOTCANDLES/ LUX	290/3122	129/1189	73/786	32/344	18/194
MAX. DIAMETER	15'/ 4.6m	22.5'/ 7m	30'/ 9.2m	45'/ 13.7m	67'/ 20m

PHOTOMETRICS with 4000w LAMP

SPOT					
FOOTCANDLES/ LUX	4580/49,299	2035/21,905	1145/12,325	509/5479	286/3078
MIN. DIA. IRIS CLOSED	1'/ 30cm	1.5'/ 46cm	2'/ 61cm	3'/ 92cm	4'/ 102cm
MAX. DIAMETER	6'/ 1.8m	9'/ 2.7m	12'/ 3.6m	18'/ 5.4m	27'/ 8.1m
FLOOD					
FOOTCANDLES/ LUX	1169/12,583	520/5597	292/3143	130/1399	73/786
MAX. DIA.	15'/ 4.6m	22.5'/ 7m	30'/ 9.2m	45'/ 13.7m	67'/ 20m

PO BOX 214 KINGS HIGHWAY SUGAR LOAF NY 10981 USA PH. +1 (845) 469-2285 FAX +1 (845) 469-5355

e-mail: info@lycian.com website: www.lycian.com

PH. +1 (845) 469-2285 FAX +1 (845) 469-5355